

Thank you for purchasing a Linortek FARGO R8/R4. FARGO comes complete with all parts and software necessary for installation, operation and ability to control the devices attached to it. Upon arrival, please inspect the contents of the box to ensure that your kit is complete and contains all necessary components.

FARGO – PRODUCT CHECKLIST

Each FARGO product kit box contains the following:

- FARGO Server
- 1M CAT5 (or better) Patch Cord
- 1A 12V Power Supply
- Getting Started Instructions

For complete product documentation, current software, web pages and various utilities, visit linortek.com. The FARGO manual, as well as software updates, are available for download.

INSTALLATION

FARGO is simple to install and operate. If you require further direction, please download FARGO R8 manual.

- Connect the FARGO to a router or computer.
- Connect the supplied power cord.
- Identify the FARGO IP address (i.e. 192.168.nnn.nnn). A tool is on our website if you require assistance.
- Launch FARGO web pages in browser. Click Login button on the homepage. Default **username/password is admin/admin.**

For further direction on how to edit relays and program schedules, refer to the manual.

If you have any questions regarding your FARGO product, please email us at fargo@linortek.com. We welcome your comments, suggestions and product feedback. We strive to insure product satisfaction and will use your responses to make FARGO a better product for our customers.

SOFTWARE

We are always working to improve our software and adding features. So make sure to check (www.linortek.com) to make sure you always have the latest software.

We have software to help with finding Fargo and for loading new software. Discover.jar is a program that will automatically locate your Fargo server. (Java runtime needs to be loaded to use this feature. When downloading, be sure to read the screens and do not download the optional programs that you do not desire. Can be found here: <http://java.com/en/download/index.jsp>) There is a bootloader that provides a method to update the server software remotely over your network or internet. New web page files on your PC can be uploaded directly by Fargo.


RELAY VOLTAGE SPECIFICATIONS

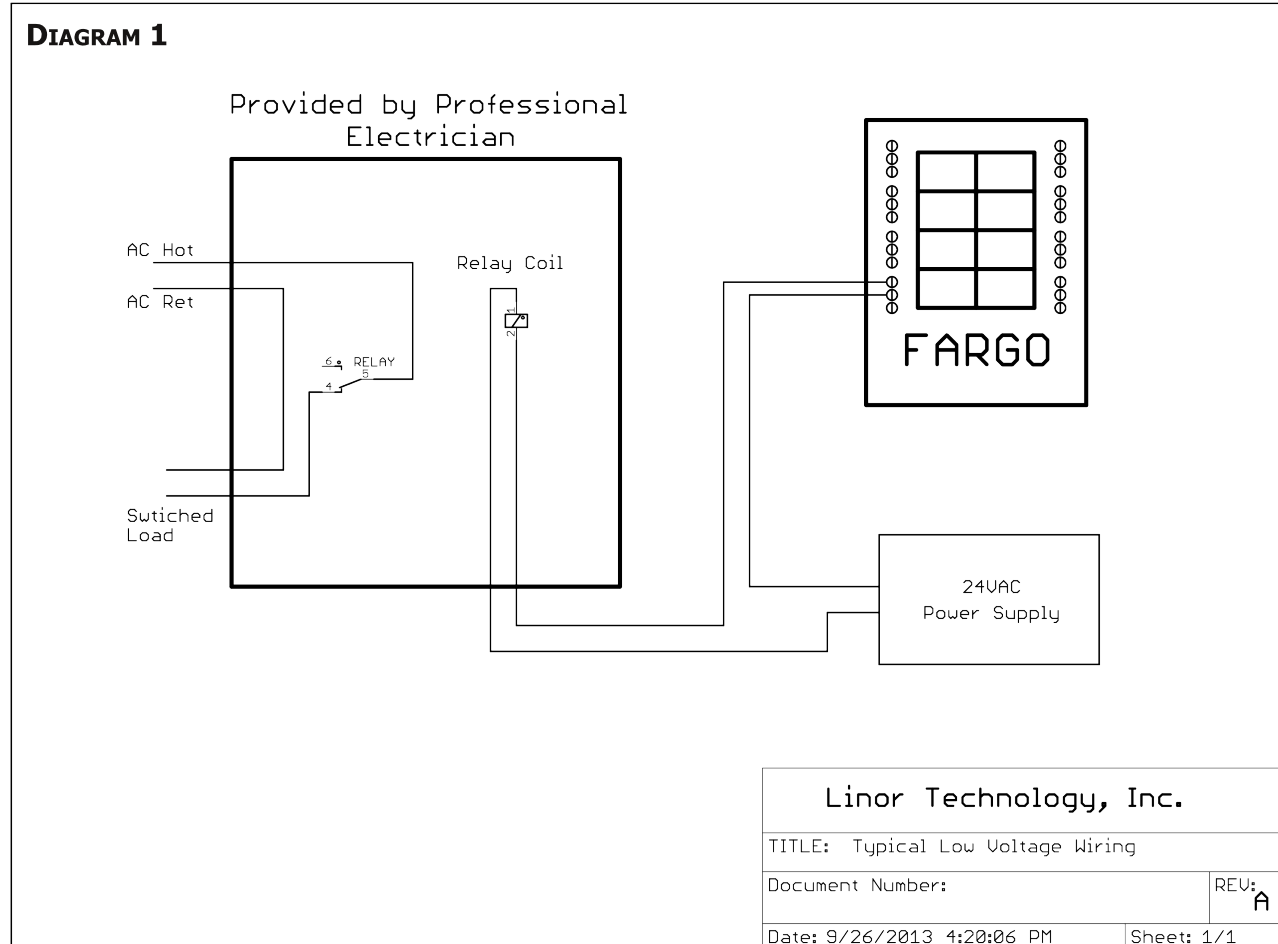
Please use caution when connecting devices. FARGO is **NOT** designed to connect to any **voltage greater than 48V**. If you want FARGO to control Line Voltage products and devices, refer to Diagram 1 on back. Utilizing this arrangement, should allow you to virtually control anything. It is important that you use licensed electricians and comply with electrical codes that are applicable to your location. These codes exist for your safety, as well as the safety of others. Linor Technology assumes no responsibility for any harm or damage caused by not following specified instructions for installation and product usage.





Fargo R8 shown, your model may look different.


RELAY VOLTAGE SPECIFICATIONS

 Please use caution when connecting devices. FARGO is **NOT** designed to connect to any **voltage greater than 48V**. If you want FARGO to control Line Voltage products and devices, refer to Diagram 1. Utilizing this arrangement, should allow you to virtually control anything. It is important that you use licensed electricians and comply with electrical codes that are applicable to your location. These codes exist for your safety, as well as the safety of others. Linor Technology assumes no responsibility for any harm or damage caused by not following specified instructions for installation and product usage.



 The Fargo unit is a self contained web server configured with various input and output circuits. Although the relays are rated for higher voltage, this product is not designed for use at line voltages. You should not use voltages through the Fargo product exceeding 48 volts. IT IS NOT SAFE.

 Fargo is what is called a "bare board" product and is supplied without a housing. It has only low voltage on it. You need to use some special handling to prevent damage to the circuits. All electronics are susceptible to electro-static discharge. This high voltage "shock" can permanently damage your device. Before handling the product you should touch surface such as a grounded workbench or table. It is also best to handle the device from its edges. If you notice that your chair or clothes often cause static discharges you need to exercise extra caution.

 The unit is supplied with four rubber feet which keeps the bottom of the board from coming into contact with the surface you put it on. Be careful not to let metal objects, such as screw drivers or hardware, come in contact with the bottom of this product. The board can be mounted on a panel using stand offs and #4 hardware. The mounting holes are connected to the GROUND signal.

Linortek hopes you enjoy the freedom to manage your applications whether away for work or play.

Winston Salem, NC 27101

info@linortek.com

Information subject to change without notice.

www.linortek.com

01-508-00009A

10-13 R001V001

Printed in U.S.A.